



**TAUCH TERMINAL RESORT TULAMBEN & SPA**  
Valid Immediately – March 2022

**ROOM RATES**



**Room Rates/Night incl. breakfast for Summer Season (1<sup>st</sup> May – 31<sup>st</sup> October):**

Seaview Bungalow (25m <sup>2</sup> )	
Single occupancy	59,- €
Double occupancy	79,- €
Seaview Deluxe (40m <sup>2</sup> )	
Single occupancy	89,- €
Double occupancy	109,- €
Seaview Liberty Suite (52m <sup>2</sup> )	139,- €
Seaview Family Suite (65m <sup>2</sup> )	175,- €
Consist of 2 rooms: 1 with Double bed + 1 with Twin beds	
2 Bathrooms	
Extra Bed (except in Bungalow) incl. breakfast	25,- €

**Room Rates/Night incl. breakfast for Winter Season (1<sup>st</sup> November – 30<sup>th</sup> April):**

Seaview Bungalow (25m <sup>2</sup> )	
Single occupancy	49,- €
Double occupancy	69,- €
Seaview Deluxe (40m <sup>2</sup> )	
Single occupancy	79,- €
Double occupancy	99,- €
Seaview Liberty Suite (52m <sup>2</sup> )	125,- €
Seaview Family Suite (65m <sup>2</sup> )	149,- €
Consist of 2 rooms: 1 with Double bed + 1 with Twin beds	
2 Bathrooms	
Extra Bed (except in Bungalow) incl. breakfast	20,- €



**\*Early Bird Winter Special:**

Book at least 90 days prior to arrival and pay 60 days prior arrival to get additional discount 10% off room rate!  
 (For stay period 1<sup>st</sup> November 2021 to 31<sup>st</sup> March 2022)

Above prices are incl. FREE uses of Bicycles, Billiard-Table, Snorkel gear, Drinking Water, Water bottle (No plastic – take away!), Stand-Up Paddle Board, Sea Kayaks, WIFI/WLAN, Weekly market visit.

<http://tulamben.com>

Every guest will also receive a welcome bag incl. present and a reusable drinking bottle which can be refilled with water completely free of charge during their stay... and of course the bottle is yours.



**Complimentary:**

Coffee & cake on your birthday

Honeymooner receive a bottle of lokal wine FREE OF CHARGE

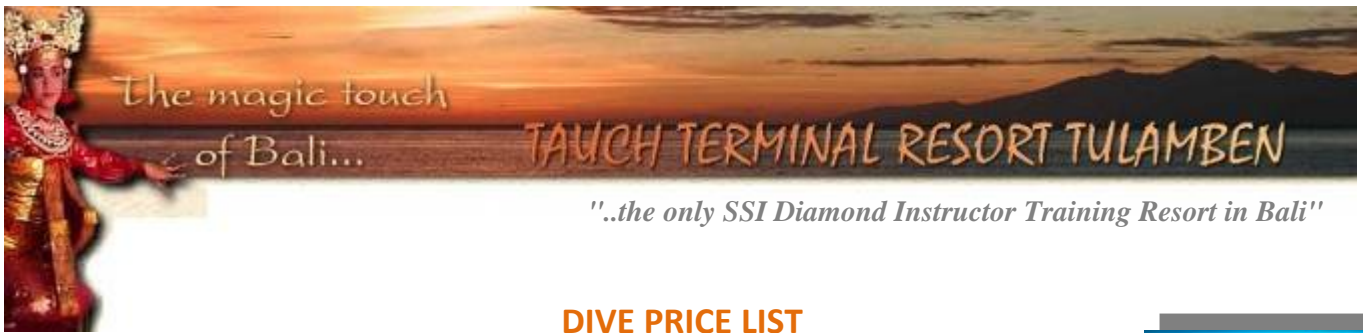
**Meal Surcharges/Day:**

Halfboard (HB)	25,- €
Fullboard (FB)	40,- €

Above prices are per person per day, HB incl. lunch or dinner while FB incl. lunch and dinner. Both are based from our chosen menu.

**TRANSFER SERVICE\***

Per Car	1–4 Person(s)	5–8 Persons
Airport – Tulamben	80,-€	115,-€
Tulamben – Airport	65,-€	95,-€
Airport – Tulamben – Airport	135,-€	195,-€
Padang Bai – Tulamben	50,-€	
Sambirenteng/Tejakula – Tulamben	30,-€	
Pemuteran – Tulamben	65,-€	



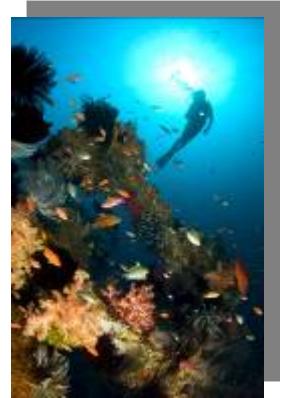
## DIVE PRICE LIST

### Diving in Tulamben:

Liberty Wreck, Drop Off, Coral Garden, Batu Kelebit, Emerald, Palung Palung, Seraya

### Dive prices:

2 Dives	58,-€
4 Dives	115,-€
8 Dives	205,-€
12 Dives	270,-€
Add Dive over 12	+22,-€
20 Dives	425,-€
Add Dive over 20	+20,-€



The prices are per person incl. Dive Guide (Divemaster or higher), weight and tank.  
(Dive package can be shared with your roommate)

Rental equipment per day: ABC € 5,-; BCD € 5,-; Wetsuit € 5,-; Regulator € 5,-; Fullset € 15,-

### Non Limit Diving:

1 Day	105,-€
2 Days	180,-€
3 Days	255,-€
Add Day after 3 Days	+75,-€

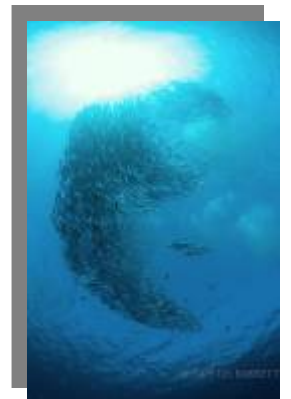
Non Limit Diving in Tulamben incl. tanks & weight (excl. Boat Dive surcharge + equipment)

### Additional Charge per Person:

Boat dive Surcharge (Batu Kelebit, Palung Palung, Emerald, Seraya or Kubu)	+10,- €
3 Boat dive Surcharge Package (Batu Kelebit, Palung Palung, Emerald, Seraya or Kubu)	+25,- €
15 l. Tank per dive	+2,- €

### Extra Surcharge (per person per dive) :

Junior Open Water Diver/Scuba Diver	15,- €
Private Guide (only if available)	15,- €



→ **NITROX for FREE** at all Tulamben dive sites!





## DIVE DAYTRIPS OUT OF TULAMBEN (no Nitrox)

On daytrips we take 2 dives out of your dive package. Additionally you have to book a transport package for the destination of your choice. This transport package includes all transfers by bus and boat, lunch, softdrinks, all entrance tickets, diveguide (Divemaster or higher ), insurance.

Full set rental equipment is available for 15 Euro per day.

### **Transfer Packages\*:**

1	NUSA PENIDA/ LEMBONGAN	€	60,-
2	NUSA PENIDA/ MANTA POINT	€	85,-
3	SHARK POINT	€	45,-
4	PADANG BAI/ BLUE LAGOON	€	35,-
5	AMED	€	30,-
6	SECRET BAY (minim.2 Person)	€	95,-
7	MENJANGAN (minim.2 Person)	€	85,-



*\*Transportation -, Dive Daytrips- and Underwater Dive Safari - Prices are subject to change without prior notice in case there is dramatic petrol price increase.*





**TAUCH TERMINAL RESORT & SPA TULAMBEN**  
**SSI DIVE EDUCATION PROGRAMS & COURSES**

(German, English, Indonesian)

<b>Try Scuba</b> «No Certificate»	75,-€
Theory Lesson, One Pool Training/Confined Water Dive, One Open Water Dive One Instructor per Participant during the Open Water Dive	
Additional Dive	50,-€
<b>SSI Scuba Diver</b> «Limited Certificate» Max 12m	330,- € (1 Participant)
2 Days, Academic, Pool Training, 2 Open Water Dives, Teaching material, Gear, Certification fee	260,- € (2 or more Participants)
<b>Open Water Diver</b> «Worldwide Valid Certificate»	500,-€(1 participant)
4 Days, Academic, Pool Training, 4Open Water Dives Teaching material, Gear, Certification fee	390,-€ (2 or more participants)
<b>Advanced Adventurer Program</b>	290,-€ (1 participant)
5 Open Water Dives of 5 distinctive specialties Teaching material, Gear, Certification fee	220,-€ (2 or more participants)

***All other SSI Specialty Courses also available***

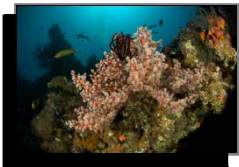




## SHIPWRECK PACKAGE (3 Wrecks, 10 Dives, 5 Days)

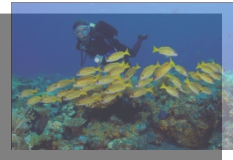
### Day 1 :

**Welcome** at our Tauch Terminal Resort Tulamben & Spa  
 Check in followed by a divebase briefing, gear check & storage  
 Orientation dive at USAT Liberty shipwreck  
 Later you might like to try our Wellness center or have a Deko-beer at our beach bar...  
 Night at the Resort



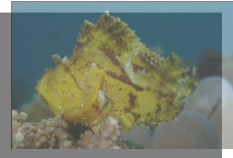
### Day 2 : Dive the Legend...

After an extended breakfast you do your first dive of the day at the shipwreck.  
 Second dive of the day is set for around 14:00 hours and you can choose to dive either Coral Garden, Drop Off or Shipwreck.  
 18:30 start preparation for night dive at Shipwreck  
 Dinner at Resort



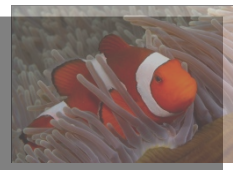
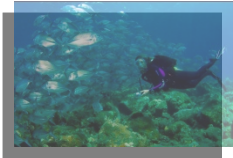
### Day 3:It's Boga Day...

Breakfast  
 Around 8.30h your car is ready to start a 15 min drive to Kubu  
 1st Dive of the day at Kubu Wreck  
 Surface interval incl. Softdrinks and Snacks  
 2nd dive of the day at Kubu Wreck  
 Return transfer to Tauch Terminal Resort Tulamben & Spa  
 18.30h next night dive at "USAT LIBERTY" or Coral garden or Drop off  
 Dinner at Resort



### Day 4:Japanese Patrol Ship...

Breakfast and around  
 8.00h start transfer to Amed's "Japanese Wreck"  
 First dive of the day at the "Japanese Wreck"  
 Surface interval incl. Snacks & Softdrinks  
 Second dive at "Japanese Wreck"  
 Return transfer to Tulamben incl stop at the traditional salt farming of Cemeluk  
 Relaxing massage at our Alami Spa



### Day 5: Screw it... Let's dive again...

After breakfast you will do dive number 10 wherever you wish to at Tulamben Bay  
 Check out and end of package arrangement

#### Shipwreck package Rates:

490,- Euro per person Bungalow sharing room  
 100,- Euro single surcharge  
 550,- Euro per person Deluxe sharing room  
 200,- Euro single surcharge

#### Shipwreck – Package includes:

- 5 Days/4 Nights at Seaview Bungalow or Seaview Deluxe incl. breakfast
- 8 Dives plus 2 Night dives incl. professional Diveguides
- Tanks, Weights, Belts & Torch
- Car transfer to Kubu & Amed
- 2x Snacks & Soft drinks, 2x Lunch
- Complementary drinking bottle with unlimited water refills
- 1 hour Spa treatment at our Wellness center
- Welcome bag & present



## 7 DAYS/ 6 NIGHTS DISCOVER BALI UNDERWATER DIVE SAFARI\*

Day 01



**WELCOME!** Hotel/ Airport Pick up, Private Minibus transfer to through tropical surroundings to the east coast, to the peaceful Padangbai /CandiDasa Area. Warm welcome by our supervising divemaster(s), and Resort Management incl. welcome cocktail while checking in. Short introductory by the hotel management and dive briefing by our divemaster(s). An afternoon refresher dives also possible on the resort's swimming pool area. Overnight in the breathtaking Resort overlooking the breathtaking east coast of Bali.

Day 02



**DANCE WITH SHARKS!** After a nice breakfast, and equipment preparations you will be guided to the Padangbai beach where our diveboats are anchored. From there you will join the rest of our dive team of the day, including captain and boat crew who will then transfer you to your first encounter of the day, SHARKS! Dives will be done at the Mimpang Shark Point and the Biaha Rocks of Candidasa Area, just approx 10 min boat ride from Padangbai Beach. Lunch and Hot/ Cold drinks will be served onboard. Afternoon back from the trip, time for some sunbathing and snorkeling in the Indian Ocean. Overnight Padangbai Area / CandiDasa Area

Day 03



**SUNFISH RUSH!** It's time for another Bali's Top Pelagic encounter of the day, MOLA-MOLA (Sunfish). Morning rituals same as before, boat rides will take approx 30 min to the designated divesites in the Nusa Penida/ Nusa Lembongan Island, depends on current sea and weather conditions our supervising divemaster(s) will then decide which site will be the best for the Mola encounter. Lunch of Chicken Curry along with hot/ cold drinks will be served as usual onboard. Afternoon leisure after the dives, will then be spend in the Padangbai/ CandiDasasurroundings with its beautiful beaches.

Day 04



**MANTA SHOWDOWN..** Well, no dives should be completed with the Tauch Terminal Dive Team without a stop at our MANTA cleaning station. Early checkout is required, breakfast will be served earlier and everything should be ready on the boat by 08.00h due to the divesite locations which will take approx 45 – 60 min boat rides. That should wrapped up your Pelagic Adventure of the week, after dives are concluded you will be transferred further up north across a beautiful traditional Balinese surroundings, through rice fields while overlooking the Mt. Agung volcano. On the way, our diveguide(s) and driver will show you around some of Bali's traditional Hindu Temples and ancient Palaces before you reach our very own Tauch Terminal Resort Tulamben. A classic Balinese hospitality will then continue from here on, you will be welcome and introduced to our facility by Hotel and Divebase Manager before checking in and enjoy another of your breathtaking sea-view rooms. Overnight and dinner on our facility with a style, accompanied with a traditional Balinese Dance while enjoying our Chefs daily specialties.

Day 05



**WWII SHIPWRECK!** A Bali dive safari wouldn't be a safari at all without visiting Bali's very own WWII USAT Liberty Shipwreck, primadona of the day which is only steps away from your room. On this day you will enjoy Tulamben's House Reefs underwater hospitality with its most complete variety of corals, fish and critters. After the wreck, you will be guided through the Coral Garden, and Tulamben Drop-off. Night dive is included, and to add some more excitement in it, Nitrox are free for all Tulamben sites. Overnight in Tulamben.



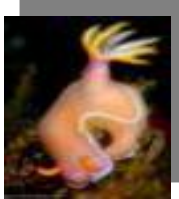
Day 06

**KUBU WRECKA** 10 minute ride from Tulamben Beach will bring you to the ship wreck of KUBU. A 50m long fishing vessel sunk on purpose in the year 2012. It rests in 16 to 36 meters depth. We can dive it in 3 levels. In the deepest level you can find a jeep. After the dive back to Tulamben just to spend the rest of the day with non limit diving. Your second nightdive of the week brings the day to a great end. Overnight in Tulamben



Day 07

**MACRO FEAST!** In case you've missed it, your last day of diving will be spend exploring Tulamben's divesites for some macro critters, courtesy of our Tulamben Dive Team. 2 Shore dives will be done in the morning, before getting ready for your next adventure/ holiday throughout Bali. By the afternoon after checking-out, you will be transferred to your next destination/ extension Hotel. END of SAFARI..



**Discover Bali Underwater Dive Safari Rates** 1050,- € per Diver, if sharing room  
 650,- € if 2<sup>nd</sup> Person sharing room is Non Diver  
 Additional Single Person Surcharge 400,- € per Person  
 Additional Full Set Dive Equipment 75,- € per Person for whole safari

**Above prices include:**

- All transfers on water and land incl. hotel pick up and/ or airport return transfer
- Welcome cocktail at all featured hotels
- 6 Nights accommodation on designated hotels/resort incl. breakfast
- 6 Diving days incl. night dives and unlimited dives in Tulamben
- Tanks, weight, and belt for Diver
- Full snorkel gear for non diver
- Divemaster or higher joining whole safari
- English, German or Indonesian speaking guide
- 3x Lunches and drinks during daytrips
- Welcome bag incl. local present
- Local dance performance
- Free **NITROX** for all Tulamben divesites

**Terms and Conditions:**

- Hotel accommodation in Padangbai/Candidasa may be changed depend on availability and circumstances
- Itinerary order may be changed depend on best weather and condition to ensure each encounter.

*\*Transportation -, Dive Daytrips- and Underwater Dive Safari - Prices are subject to change without prior notice in case there is dramatic petrol price increase.*





## Contact Us



*Tauch Terminal Resort Tulamben & Spa*

*Telp. (62-361) 772 920, 774 504*

*Fax. (62-361) 773 473*



[www.tulamben.com](http://www.tulamben.com)



[www.facebook.com/tauchterminal](http://www.facebook.com/tauchterminal)



[www.instagram.com/tauchterminalresorttulamben](http://www.instagram.com/tauchterminalresorttulamben)



[www.youtube.com/user/TauchTerminal](http://www.youtube.com/user/TauchTerminal)



+62 81 99 33 66 222

*"..The only SSI Diamond Instructor Training Resort in Bali"*